

INDIVIDUAL

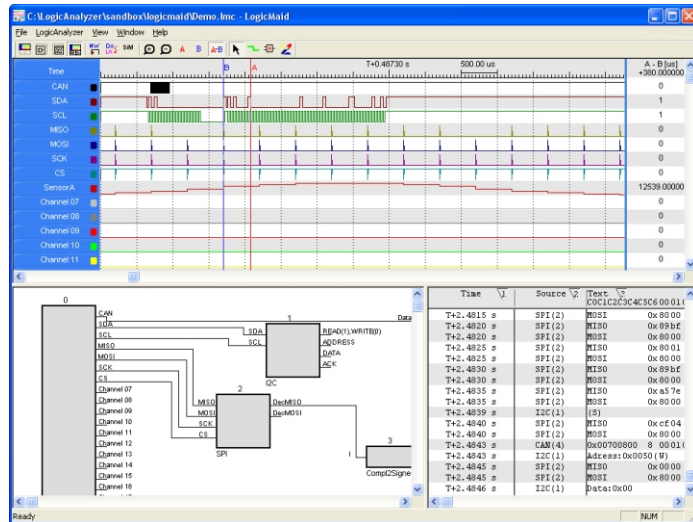
INNOVATIVE

FLEXIBLE

LogicMaid Logic & Bus Analyzer

Technical data

- 24 channels
- 100 MHz
- compression up to 125.000 : 1
- economical behaviour, if not compressible
- 1 Mbyte RAM
- CAN, SPI, I²C
- Addition, Multiplication etc.
- extendable with your own Interpreters
- integrable in external programs f.e. LabView
- extensive interpreter blocks and searching options
- USB 2.0 cable
- Windows 2000, WindowsXP
- optionally extendable with an AD-card



LogicMaid, Logic- und Bus Analyzer, with its comfortable Windows-modular-design, enables you to create your own measurement environment.

You can build your own environment by connecting standard blocks such as SPI, I²C, CAN etc via a graphical block diagram. After the measurement is finished the data will be analyzed and interpreted. LogicMaid provides a quick overview with concrete values.

Optionally our LogicMaid Analyzer can be extended with an 80 MSPS Analog-Digital-card, where you can use all interpreter-blocks. In that case we simply interpose a comparator-block and add herewith an analog application for all your functions.

LogicMaid Logic-Analyzer is available in two versions:

Standard Version is equipped with different Interpreter blocks, which can be individually combined depending on your requests. Standard interpreters such as I²C, SPI, CAN and operations as multiplication, addition, comparison, etc. are included.

Developer Version offers you additionally to the Standard Version an opportunity to create and program your own Interpreter block in C.

LogicMaid takes here over the connection to the external compiler. Herewith the required DLLs can be easily created.

<http://www.logicmaid.com/> or <http://www.inovaflex.net/>